

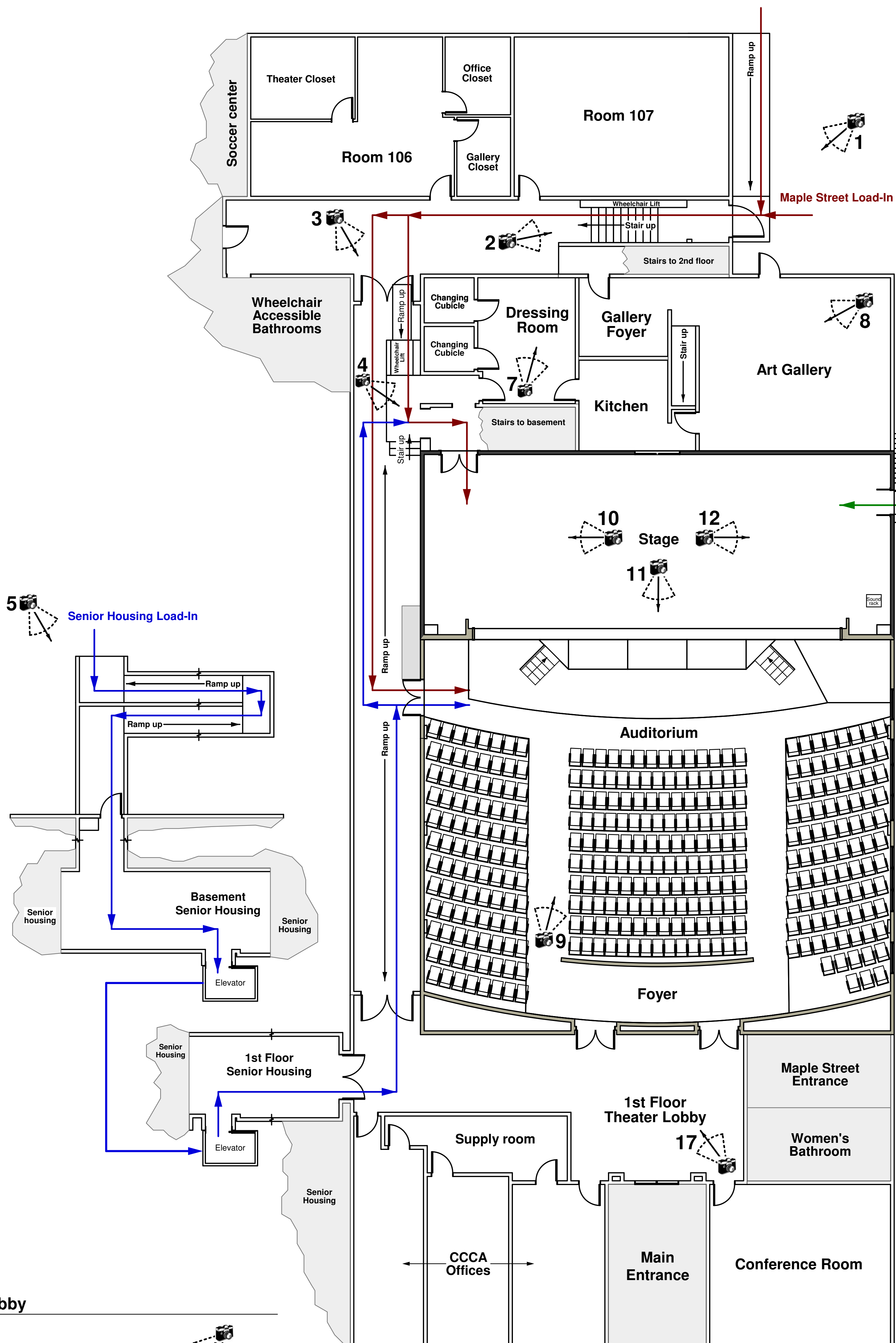
Martin W. Kappel Theater
 Chenango County Council of the Arts
 27 West Main St, Norwich, NY
 607-336-2787 - chenangoarts.org

PROD	Technical information	
TITLE	Facility floorplan	
SCALE	DATE	REV
1/8 In = 1 Ft	8/23/08	A

Drawing Description
 The floorplan below illustrates the layout of the Chenango County Council of the Arts facility in the Norwich Center building. The hatched regions of the floorplan represent spaces lacking detail or borders with other parts of the building. The floorplan illustrates the load-in routes that may be used to bring scenery and equipment into the theater. A photo symbol on the floorplan indicates that a photo is available of that location; see the facility photo album to view the photos.

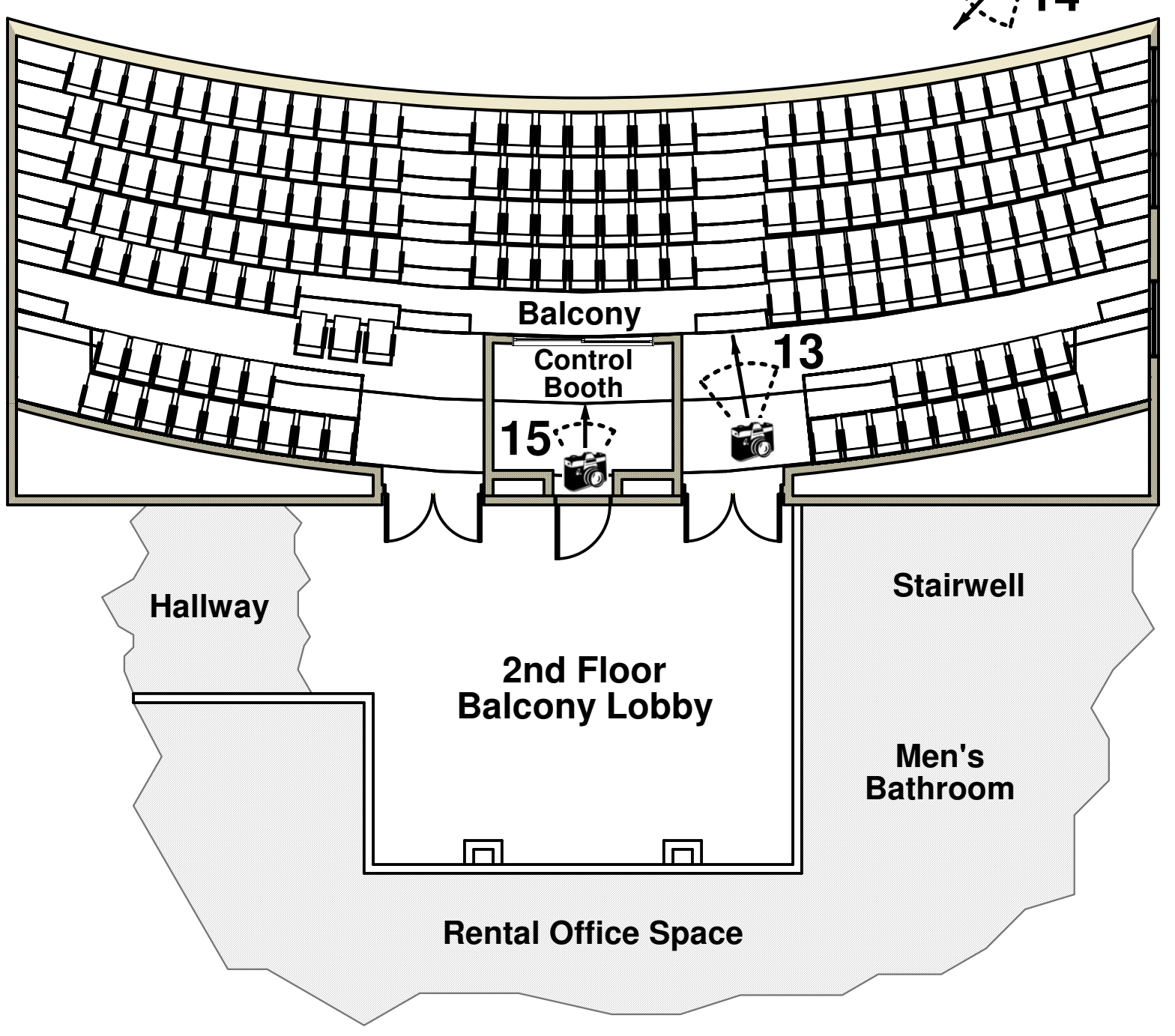
Theater Load-In Routes
 The various load-in routes are indicated on the floorplan. Coordinate load-in of scenery and equipment with the Chenango County Council of the Arts prior to all events.

- Path of the Maple Street route
- Path of the Senior Housing route
- Path of the fire escape route



Balcony and Balcony Lobby

1/8 In = 1 Ft



Important Notes
 This drawing was created for theatrical purposes only and should not be referred to for architectural purposes. If this drawing is printed from the PDF file the resulting scale may vary from that indicated on the drawing.

A	Photos and symbols revised	8/23/08	MAG
REV	DESCRIPTION	DATE	APPROVED
REVISION HISTORY			